

PALETTES PLASTIQUE 1220 X 1020 PONT SUPÉRIEUR OUVERT 3 SEMELLES MEDIUM

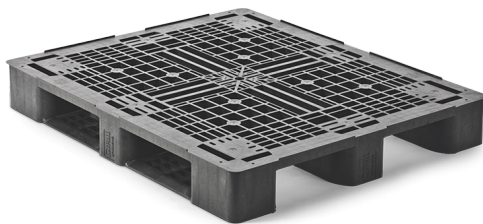
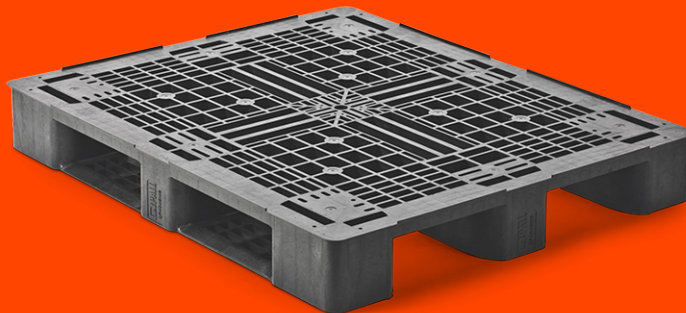
QP4048MR3RR



MEDIUM



100%



PROPRIÉTÉS

Dimensions (mm) :	1220 x 1020
Hauteur (mm) :	150
Poids (kg) :	15,09
Charge statique (kg) :	5000
Charge dynamique (kg) :	1500
Charge dans le rack (kg) :	700
En bas :	3 semelles
Pont supérieur :	pont supérieur ouvert

DISCLAIMERS

- Racking load conversion protocol based on 25kg bags test.
- Tolerance deviation in the size of the plastic pallet +5 / -5 mm. Tolerance deviation in the weight of the plastic pallet +5 / -5 %.
- The load performance (static dynamic and racking) are determined under a evenly divided load.

PALLETS WITH
A PURPOSE



Download Now

Q-PALL BV
Edisonweg 9
5466 AR Veghel
Nederland
+31 413 353 111
info@qpall.com
www.qpall.com

Q-PALL®
PLASTIC PALLETS