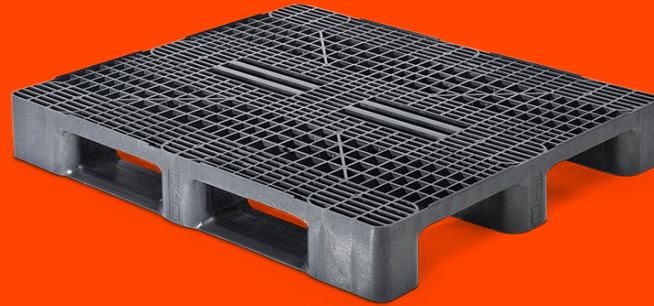


PALETTES PLASTIQUE 1200 X 1000 PONT SUPÉRIEUR OUVERT 3 SEMELLES LOURDE



3.QP1210HR3RR



PROPRIÉTÉS

Dimensions (mm) :	1200 x 1000
Hauteur (mm) :	160
Poids (kg) :	19,46
Charge statique (kg) :	7500
Charge dynamique (kg) :	2000
Charge dans le rack (kg) :	1250
En bas :	3 semelles
Pont supérieur :	pont supérieur ouvert

DISCLAIMERS

- Racking load conversion protocol based on 25kg bags test.
- Tolerance deviation in the size of the plastic pallet +5 / -5 mm. Tolerance deviation in the weight of the plastic pallet +5 / -5 %.
- The load performance (static dynamic and racking) are determined under a evenly divided load.

**PALLETS WITH
A PURPOSE**



Download Now 

Q-PALL BV
Edisonweg 9
5466 AR Veghel
Nederland
+31 413 353 111
info@qpall.com
www.qpall.com

Q-PALL[®]
PLASTIC PALLETS