



Elderberry

Elderberry, also known as Sambucus has been sought after for centuries for use in medicine and as a food colorant. Grown in temperate to sub-tropical regions globally, Elderberry juice is a dark red liquid with a characteristic odor. Due to the variety of anthocyanins present, shade ranges from Pink to Red can be achieved depending on the application.



Applications:

Beverages, Fruit confectionery, Sorbets and Fruit sauces

Forms Available:

Product Name	Labels	Form
Futurals 3503 Raspberry Red	Elderberry Juice Concentrate	Liquid
Futurals Pro Raspberry		Liquid

Stability Conditions:

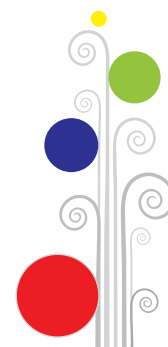
pH Range	Heat	Light
2.5 - 4.5	Good	Good

Labelling Recommendation:

Elderberry Juice Concentrate

Shades:

Pink - Red - Purple



OUR OTHER BRANDS

